
ESTHETIC PERIODONTAL SURGERY FOR THE GENERAL PRACTITIONER

Module I: Friday, May 9, 2008 (Los Angeles) or
Saturday, April 26, 2008 (Sacramento)
Module II: Saturday, May 10, 2008
Module III: Sunday, May 11, 2008

THE USES OF PHOTOSHOP & POWERPOINT IN MODERN DAY DENTISTRY: A HANDS-ON COURSE

Saturday, May 17, 2008

PHYSICAL EVALUATION

Monday, May 19, 2008

EMERGENCY MEDICINE

Tuesday, May 20, 2008

MONITORING AND CLINICAL EMERGENCY MEDICINE

Wednesday, May 21, 2008

NEW ODONTIC SEMINAR: 2008 UPDATE ON COMPLETE DENTURES

Friday, May 30, 2008

ADVANCED PERIODONTAL INSTRUMENTATION

Friday - Saturday, May 30 - June 1, 2008

ENDODONTICS A TO Z: HANDS-ON WORKSHOP FOR THE GENERAL PRACTITIONER

Part I: Friday - Sunday, June 6 -8, 2008
Part II: Friday - Sunday, June 20 - 22, 2008

MODERN HYPNOSIS FOR 21ST CENTURY DENTISTS

Saturday - Sunday, June 7 -8, 2008

ESTHETIC REHABILITATIONS AND BONDED PORCELAIN RESTORATIONS: THE ULTIMATE COURSE FOR DENTISTS AND DENTAL TECHNICIANS

Friday - Saturday, June 13 - 14, 2008

COMMON ORAL LESIONS (2): SOFT AND HARD TISSUE DISEASES

Saturday, June 14, 2008



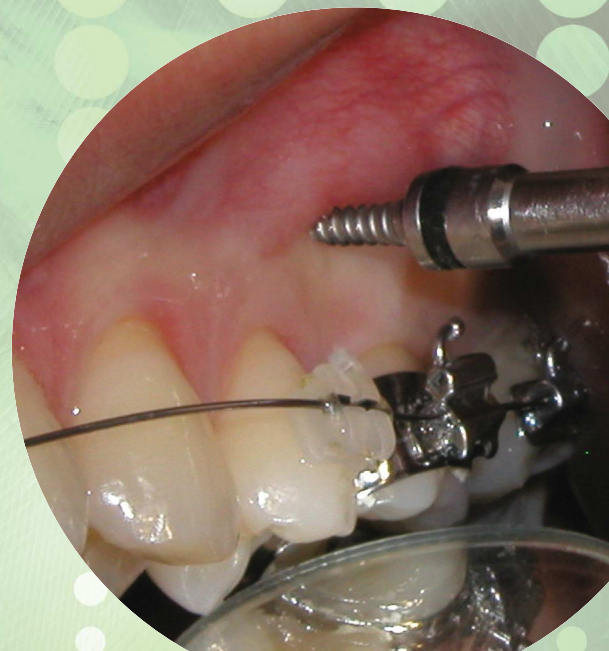
USC School of Dentistry is an ADA CERP, CDA and AGD recognized provider

USC School of Dentistry
Office of Continuing Education
Phone: 213.821.2127
Fax: 213.740.3973
E-mail: cedental@usc.edu
Website: www.uscdentalce.org



ADVANCED CONCEPTS IN TEMPORARY ORTHODONTIC IMPLANT ANCHORAGE

USC School of Dentistry
Friday - Saturday, June 6 -7, 2008
9:00 A.M - 5:00 P.M



SPEAKERS



Glenn T. Sameshima, DDS, PhD

Associate Professor of Orthodontics and Craniofacial Biology at the University of Southern California School of Dentistry, Dr. Sameshima is the Chairman and Program Director of the Advanced Orthodontic Program.



Kee Joon Lee, MS, PhD

Assistant Professor at the College of Dentistry, Department of Orthodontics at Yonsei University in Seoul, Korea.

SYNOPSIS

Temporary anchorage devices (TAD) such as mini implants or mini screws are now widely accepted and are revolutionizing the way orthodontists treat their patients. Among the advantages of using implant anchorage are less compliance required from patients, shorter treatment time, and better alternatives to traditional maximum anchorage and surgical orthodontics.

This is an intensive two day course. It includes two modules:

Module I focuses on the fundamentals of implant anchorage: how, when, and where to place them; troubleshooting; and types and design of miniscrews – a review for advanced users and an in depth introduction for new users.

Module II focuses on advanced topics such as treatment planning and biomechanics for the experienced orthodontist. The cases shown will also be of interest to beginning orthodontists.

Module I - June 6, 2008 *Introduction to Temporary Implant Anchorage (TAD)*

- Optimal mini screw design
- Clinical protocol
- Closed and open techniques
- What types of patients are good or bad candidates
- Why TADs fail and how to minimize failure
- Complications and trouble shooting
- Detailed video showing placement techniques

Module II - June 7, 2008 *Advanced Concepts*

Exceptional, detailed case reviews with complete pre- and post- treatment records including:

- Non-surgical correction of anterior open bite
- Intrusion of anterior teeth for esthetics or bite opening
- En masse retraction to avoid extractions
- Class II Division 1 with excess overjet
- Orthognathic surgery adjunctive procedures

MASEL



REGISTRATION FEES

Before May 15, 2008

Module I (June 6)	\$260
Module II (June 7)	\$260
Module I & II	\$455

After May 15, 2008

Module I (June 6)	\$295
Module II (June 7)	\$295
Module I & II	\$525