

Upcoming Events

PHYSICAL EVALUATION*

Thursday, June 3, 2004

EMERGENCY MEDICINE*

Friday, June 4, 2004

MONITORING AND CLINICAL EMERGENCY MEDICINE*

Saturday, June 5, 2004

CLINICAL INTRAVENOUS SEDATION

Thursday - Saturday, July 8 - 10, 2004

Friday - Saturday, July 16 - 17, 2004

*Course marked is a prerequisite for Clinical IV Sedation

ENDODONTICS FROM A TO Z: A HANDS-ON WORKSHOP FOR THE GENERAL PRACTITIONER

Friday - Sunday, June 11 - 13, 2004

Friday - Sunday, June 25 - 27, 2004

30TH ANNIVERSARY OF THE ANNUAL REVIEW OF CONTINUING EDUCATION IN DENTISTRY

Maui, Hawaii, August 5 - 8, 2004

Big Island, Hawaii, August 10 - 13, 2004

USC COMPREHENSIVE SURGICAL & RESTORATIVE IMPLANT TRAINING PROGRAM

Friday - Sunday, September 10 - 12, 2004

Friday - Sunday, October 15 - 17, 2004

Friday - Sunday, November 19 - 21, 2004

EMERGING DISEASES, INFECTION CONTROL AND CALIFORNIA LAW

Saturday, October 2, 2004

CHRONIC OROFACIAL PAIN AND ORAL MEDICINE MEDICATIONS PROTOCOLS FOR DENTISTS

Friday - Saturday, October 8 - 9, 2004

THE USC THIRD INTERNATIONAL ENDODONTIC SYMPOSIUM

Friday - Saturday, October 29 - 30, 2004

ORAL MEDICINE SYMPOSIUM: THE FUTURE IS NOW!

Friday - Sunday, November 5 - 7, 2004

THE ARTISTIC DENTIST: EXCELLENCE IN DIRECT ANTERIOR AND POSTERIOR COMPOSITES

Saturday, December 4, 2004

ADACERP
CONTINUING EDUCATION RECOGNITION PROGRAM



USC School of Dentistry is an ADA CERP, CDA and AGD recognized provider

USC School of Dentistry
Office of Continuing Education
Phone: 213.821.2127
Fax: 213.740.3973
E-mail: cedental@usc.edu
Website: www.usc.edu/dental

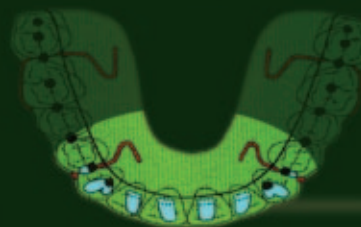
USC
SCHOOL OF
DENTISTRY

USC
SCHOOL OF
DENTISTRY

*107 Years of
Tradition and Excellence*

Temporomandibular Disorders: A Workshop Course Covering Arthrogenic, Myogenic, Derangements and Uncommon TMD

Friday - Saturday
July 16 - 17, 2004
8:30 a.m. - 5:00 p.m.



Temporomandibular Disorders

Friday - Saturday, July 16 - 17, 2004 • 8:30 a.m. - 5:00 p.m.

A WORKSHOP COURSE

14 Hours of Continuing Education



Glenn Clark, DDS, MS

Professor, Division of Diagnostic Sciences and Director of Orofacial Pain & Oral Medicine Residency Program and Center, USC School of Dentistry.



Jack Broussard, DDS

Assistant Clinical Professor, Division of Diagnostic Sciences and Director of Oral Health Center, USC School of Dentistry.



Ana Lotaif, DDS, MS

Assistant Clinical Professor, Division of Diagnostic Sciences and Clinic Manager of Orofacial Pain & Oral Medicine, USC School of Dentistry.

Synopsis

This two day course focuses on the four main categories of Temporomandibular Disorder, namely arthrogenic, myogenic, derangements and uncommon TMD. The morning sessions on Friday and Saturday are lecture format and will review the current standards for medical history and physical examination required for diagnosis. The lectures will include a rapid review of TMJ Anatomy, TM Joint mechanics and radiology including the use of 3D-CT. In addition, the appropriate evidence-based treatment procedures appropriate for the above conditions will be presented. In the afternoon, participants will move to a clinical setting and observe demonstrations of how to conduct a thorough physical examination on patients with TMD. The goal of the afternoon is to take a history, perform an examination and come up with a tentative diagnosis and treatment plan. Demonstrations will involve a review of the appropriate pharmacologic, behavioral, splint therapy and physical medicine management procedures. For example, myofascial pain based exercises include stretching, mobilization and manipulation methods. Muscle injections (e.g. trigger point anesthetic and botox injections) and joint injections (e.g. sodium hyaluronate, arthrocentesis and corticosteroids) will be discussed. The commonly used occlusal orthotic devices will be

discussed. The common recommended prescriptions for pain and spasm management will be reviewed. Finally, case presentations of real patients will be presented with the goal of helping the attendee become more comfortable in diagnosing and treating TMD disorders and providing them with a new understanding of TMD associated dysfunction and pain.

Upon completion of this course you will be able to:

- Understand the process of finding a TMJ Diagnosis using a standardized TMJ examination
- Understand the options for occlusal splint therapy
- Understand the various modalities of physical therapy used for TMD
- Understand the medications commonly used for TMJ disorders
- Understand management of chronic myofascial pain using fluorimethane and trigger point therapy
- Understand the basics of TMJ anatomy
- Understand the various types of TMJ disorders
- Understand the mechanism of myofascial pain induction and maintenance
- Understand the appropriate use of TMJ radiology procedures including 3D-CT, panoramic films and MRI images
- Understand how and when to perform intramuscular and intra-articular injections

This course is part of a series that are being provided by the faculty of the newly established USC Center for Orofacial Pain and Oral Medicine. For patient referrals, please call 213-740-3410.

Registration Fees

Before July 1, 2004

Dentist: \$395 • Auxiliary: \$195 (Limited 2 per dentist)

After July 1, 2004

Dentist: \$425 • Auxiliary: \$215 (Limited 2 per dentist)